

B R I
Beckett&Raeder

Landscape Architecture
Planning, Engineering &
Environmental Services

May 26, 2016 (revised June 7, 2016)

Ms. Susie Shipman
Commissioner
Peninsula Township Parks Commission
13235 Center Road
Traverse City, MI 49686

Regarding: Bowers Harbor Park Expansion

initiative

Dear Ms. Shipman,

We are pleased to submit for your consideration our proposal for professional services related to refining the site plan for the Bowers Harbor Park Expansion project and seeking public input, in response to the Township's successful acquisition of the expansion property recently. As we recall from working on the project previously, the existing park is 2.1 acres and fairly active with sports fields, tennis courts and a perimeter trail. The proposed acquisition property added 58 acres to the park to the southwest in an area identified as "the orchards."

We understand that the site planning effort you wish to embark on immediately would seek to engage the public to participate in the ultimate design and programming for the park and produce a Schematic Illustrative Plan and cost estimate. Ultimately, you would like to utilize this product to seek grant funding from MDNR for implementation and as a visualization tool as you speak to potential donors about the project.

We propose that the project can be divided into 3 distinct phases that can be awarded individually (though would need to be sequential) or collectively, at the Township's discretion. The first of these phases would be Phase I: input. In an attempt to be judicious with staff hours and project costs, we propose to host a kick-off meeting by web conference with you or your committee in which we would discuss the previously-prepared plan and any changes, issues, or concerns that we should be aware of. We will also discuss the format and forum of the Public Input Meeting and set a date. We would rely on the Township to advertise and secure meeting space/refreshments for the Public Input Meeting. We will modify the previously prepared illustrative rendering of the park to overlay on a current aerial photograph and exclude proposed design work in the existing park, for use at the Public Meeting. We will facilitate the Public Input Meeting to attain the public's desires for long-term character and programming of the park. We would then synthesize the outcome of the meeting in a written document and report to the committee via Web-conference. For Phase I, we propose a lump sum fee of \$4,980.00, inclusive of expenses.

Beckett & Raeder, Inc.
530 West 11th St., Suite 101
Ann Arbor, MI 48106

Tel: 463.2622
Fax: 463.6788

Peninsula Office
618 Peninsula St., Suite 100
Peninsula, MI 49876

Tel: 347.2622
Fax: 347.2624

Traverse City Office
327 West 11th St., Suite 20
Traverse City, MI 49604

Tel: 633.8400
Fax: 633.7000

Tampa
419 462.3400

www.bri.com

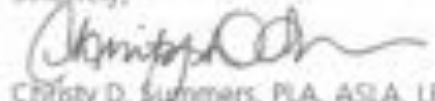
Once the public input has been received and synthesized, we will embark on Phase II: Design Alternatives. In this phase, we will attend a Site Visit and Walk Through with members of the committee (at their discretion) in preparation for preparing design alternatives. We will then prepare design alternatives and present them to you and the committee via web conference. For Phase II, we propose a lump sum fee of \$4,800.00 inclusive of expenses.

After our committee meeting, we will take direction gleaned from the design alternatives discussion, and embark on Phase III: Design Refinement. In this phase we will compile a final design plan from the alternatives presented in Phase II and a written document cross-referencing the proposed plan to Otwell-Mawby's Due Care Analysis identifying the type of mitigating factors and construction/cost challenges that the proposed program entails, assuming that the nature of the proposed program elements are the same or similar to those in the June 2013 Master Plan. (Note: should substantially different program elements be pursued as a result of the Public Input Meeting, this may entail the need for consultation with Otwell-Mawby, which may or may not generate a fee on their behalf for which we would request reimbursement at cost, upon written authorization from the Client.) We will then prepare a preliminary opinion of probable construction costs, including premium costs associated with working on a contaminated site. We will then attend a public meeting to present the final Schematic Design Plan to the committee and the public. The Schematic Design Plan will be presented as an illustrative color rendering mounted to a 24x36 foam core board. Aside from the rendered board, we will provide the rendering, Due Care Analysis cross reference, and cost estimate in digital format for your use in Township publications, grant submissions, etc. For Phase III, we propose a lump sum fee of \$5,880.00, inclusive of expenses.

We are prepared to begin the work immediately and proceed through the Phases over the summer months, which we understand to be your goal given that more property owners are in the area through the summer months for increased participation. Over the course of the project, we propose to bill monthly on a percentage completion basis.

We sincerely hope that this proposal meets with your needs and expectations. Should you have any questions or require additional information, or if you think that we have in any way misunderstood your needs for the project, please do not hesitate to contact me. We appreciate this opportunity to work with Peninsula Township Parks Commission on this important park expansion project on the Old Mission Peninsula. Thank you again for thinking of BRI as you embark on this site planning effort.

Sincerely,



Christy D. Summers, PLA, ASLA, LEED AP
Principal

Peninsula Township - Bowers Harbor Park Expansion

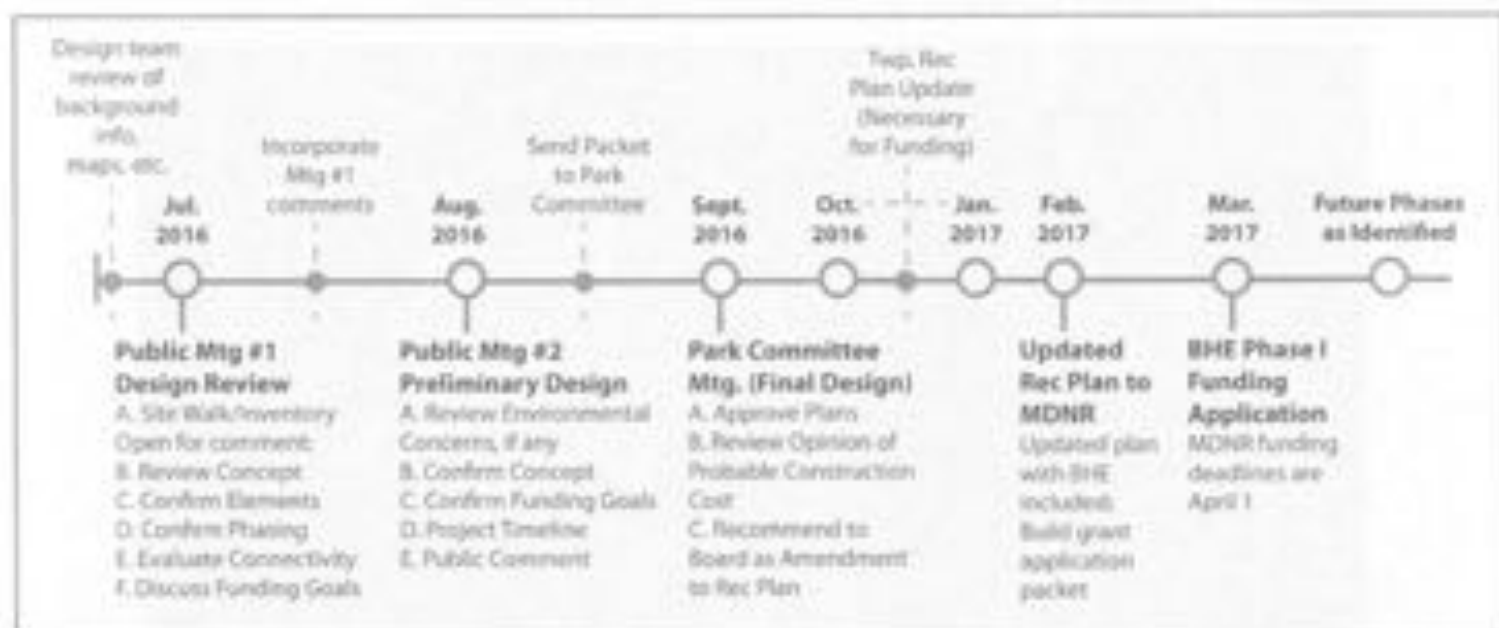


Project Overview

It's our understanding that the township's Park Committee has designated a subcommittee to develop a concept and plan for the Bowers Harbor Park Expansion. The property itself came into the township's possession December 2015 via the Grand Traverse Land Conservancy. At present the property is being used but has not been improved or marked.



Susan Shipman requested a price from GFA to provide the services necessary to further this concept. Based on comments from the subcommittee meeting June 8, 2016, we have developed the following work scope and fees to assist the township in moving this project forward with the intention of applying for MDNR grant funding in spring, 2017.



The initial public meeting would clarify and develop a conceptual design for the park area, and include a visioning board with existing and proposed elements to help define a preferred look for the park and its amenities. Subsequent meetings would refine and further develop the plan, culminating in a final design September 2016.

As the township's engineer of record, it would be our suggestion to handle the work necessary to complete these tasks as hourly fees under our existing continuing engineering contract. Under that structure, we would estimate a fee of \$10,000.00 for the tasks outlined above (through Park Committee Mtg. (Final Design)). Additional services will likely include an update to the wetland delineation (\$1500.00) and an environmental review (\$1000.00). GFA would manage these additional services on the township's behalf as part of the project.

Other Recommendations

Public Information

- We would be available to assist with graphics and other information necessary to keep the project page updated on the township website. This page can be used for fundraising as well as public information and user surveys.
- The BHE subcommittee will be mailing adjacent property owners about the project, and including a statement in the July tax mailing to remind people to check the township website for project information.

Township Rec Plan Update

- A. Since the township would need to amend this project to the rec plan in order to seek MDNR funding, now is a good time to update the overall plan for the next five years (2017-2022). We've incorporated that into the timeline above for reference.

Miscellaneous: The township may wish to consider having the property boundary staked if there continue to be boundary questions. We could handle this service under our existing contract as well.



Bowers Harbor Park Expansion Project

Qualifications Packet

Peninsula Township, Michigan

Contact:
Christy Summers
csummers@bria2.com

734.663.2622



ORGANIZATION:

Beckett & Raeder, Inc. is a Michigan Corporation headquartered in Ann Arbor with additional offices in Petoskey and Traverse City, Michigan. The firm includes landscape architects, planners, civil engineers, LEED accredited professionals and support staff maintaining registrations in the States of Michigan, Ohio, Indiana and Illinois and certification at the national level.

HISTORY:

Beckett & Raeder, Inc. was established as a Michigan corporation in 1966 with its corporate office in Ann Arbor, Michigan.

SERVICES:

Major areas of practice and scope of services include sustainable design, land use programming and analysis, master planning, campus planning, placemaking, site planning and civil engineering, site development, municipal engineering, storm water management, downtown revitalization and redevelopment, community planning and urban design, economic development, public/private development services, and environmental services.

PHILOSOPHY:

All commissions accepted by the firm are accomplished under the direct supervision of one of the firm's five principals. Senior Associates, Associates, Project Landscape Architects, Planners, and Engineers are assigned to projects in accordance with their individual expertise and the requirements of the project. In keeping with the philosophy of the office, the project team is involved in all aspects of the work through its entire duration. The firm routinely engages other consultants, as the work plan requires.

LOCATIONS:

Ann Arbor, Michigan	535 W. William, Suite 101 Ann Arbor, MI 48103 734.663.2622 ph
Traverse City, Michigan	921 West 11th Street Suite 2E Traverse City, MI 49684 231.933.8400 ph
Petoskey Office, Michigan	616 Petoskey Street Suite 100 Petoskey, MI 49770 231.347.2523 ph
Toledo, Ohio	419.242.3428 ph
World Wide Web	www.bria2.com

Services



SITE DESIGN

Planting Design
Irrigation Design
Grading Plans
Utility Plans
Pavement Design
Lighting Design
Site Design Guidelines
Park Design



MASTER PLANNING

Campus Planning
Traditional Neighborhood &
Small Town Design
Community Master Planning
Watershed Planning
Recreation Master Planning
Park Master Planning
Rural Land Planning Services
Land Use Planning



PROJECT CONSTRUCTION

Construction Administration
Field Inspection
Storm Water Operator
Bridge Inspection
Specification Writing
Project Cost Estimating
Construction Drawings



FACILITY DESIGN

Marina Design
Playground Design
Athletic Facility Design
K-12 Site Development
Subdivision Design
Campgrounds
Parks Design
Higher Education



COMMUNITY PLANNING & ZONING

Comprehensive Master Plans
Brownfield Redevelopment
Zoning Ordinance /Codes
Specialized Zoning Ordinance Provisions
Development Standards and Guidelines
Site Plan Review
Strategic Planning
Expert Witness Zoning Testimony
Community Development
Greenway Planning
New Urbanism

ANALYSIS & EVALUATION

Site Analysis
Feasibility Studies
Site Selection Studies
Buildout Analysis
Market Analysis
Demographics
Natural Features Interpretive Studies

URBAN DESIGN

Corridor Design & Planning
Streetscape Design
Waterfront Design

DOWNTOWN & ECONOMIC DEVELOPMENT

Brownfield Redevelopment
Grant Writing
Downtown Management
Downtown Master Plans
Special Finance Districts
Adaptive Reuse Studies
Retail Market Analysis
Strategic Planning/Visioning Workshops
Physical Design Plans
Streetscape Design & Implementation
Wayfinding and Signage
Tax Increment Financing & Development Plans
DDA Creation

INFRASTRUCTURE

Storm Water Management
Water Distribution Systems
Sanitary Sewer Systems
Capacity Analysis
Capital Improvement Program
Wellhead Design and Protection
Pavement Evaluation
Streets and Roads
Onsite Sewage Treatment
Utility Marking
Parking

ENVIRONMENTAL SERVICES

Site Evaluation and Analysis
Low Impact, Conservation Design
Wetland Delineation
Constructed Wetland Design and Installation
Wetland Restoration
Storm Water Management

Awards



AMERICAN INSTITUTE OF ARCHITECTS

Citation, Akron Chapter, 1984: Alltel Corporation Information Services Center, Twinsburg, Ohio: Peterson/Raeder Inc., Architects

Honor Award, Detroit Chapter, 1982
 Oakland Community College/Southfield Campus, Southfield, Michigan:
 Straub Associates, Architects

Design Award-Landscape Design 2003
 Waldenburg Park
 Macomb Township, Michigan

Design Award-Facility Design 2003
 Sharon Mills County Park, Washtenaw County, Michigan

Master Plan Award – 2000
 Charter Township of Canton Recreation Master Plan
 Canton, Michigan



AMERICAN PLANNING ASSOCIATION

Outstanding Planning Award, 1995,
 Michigan Chapter, Mitchell Creek Watershed Protection Strategy, Grand Traverse County, Michigan

Design Award – 2000
 Muskegon Lakeshore Trail Landscape Design Project
 Muskegon, Michigan

Master Plan Award – 1999
 Charter Township of Ypsilanti Recreation Master Plan
 Ypsilanti, Michigan

Design Award – 1999
 Village of Dundee – Old Ford Mill and Ford Park West Landscape Design Plan
 Dundee, Michigan

AMERICAN SOCIETY OF CONSULTING PLANNERS

Honor Award Sustainable Planning, 1997, Mitchell Creek Watershed Protection Strategy, Grand Traverse County, Michigan



MICHIGAN MUNICIPAL LEAGUE

Honor Award – 1996
 Adrian Streetscape and Downtown Revitalization Program
 Adrian, Michigan

AMERICAN SOCIETY OF LANDSCAPE ARCHITECTS

Merit Award, Michigan Chapter 2015
 Landscape Architectural Design
 Munger Graduate Residences,
 University of Michigan
 Ann Arbor, Michigan

MICHIGAN RECREATION & PARK ASSOCIATION

Design Award-Landscape Design
 2011 Bear River Valley Recreation Area
 City of Petoskey
 Petoskey, Michigan

Merit Award, Michigan Chapter - 2014
 Historic Significance
 Petoskey Bayfront Park
 Petoskey, Michigan



Design Award-Landscape Design
 2011 West Bloomfield Township
 Marshbank Park
 West Bloomfield Township, Michigan

Merit Award, Michigan Chapter - 2013
 River Raisin Heritage Corridor East Master Plan
 Monroe, Michigan

Design Award-Landscape Design
 2010 Outdoor Learning Center
 Central Michigan University
 Mount Pleasant, Michigan

Merit Award, Michigan Chapter - 2010
 Outdoor Learning Center
 Central Michigan University
 Mt. Pleasant, Michigan

Awards



Merit Award, Michigan Chapter - 2003
 Walden Park, Macomb Township,
 Michigan

Honor Award, Michigan Chapter -
 2002
 UAW-FORD Family Services and
 Learning Centers, Ten Facilities in
 Michigan, Missouri, Ohio, Kentucky,
 and Illinois

Merit Award, Michigan Chapter, 1999
 City of Adrian Downtown Streetscape
 Adrian, Michigan



Merit Award, Michigan Chapter, 1999
 Whetstone Orianna Creek Watershed
 Management Plan
 Marquette, Michigan

Merit Award, Michigan Chapter, 1989
 Townhouse Development Process,
 Michigan State Housing Development
 Authority



Honor Award, Michigan Chapter, 1989
 Monroe Coastal Zone
 Management Plan
 Monroe, Michigan

Honor Award, Boston Chapter,
 Petoskey Waterfront Development
 Petoskey, Michigan

Honor Award, Michigan Chapter,
 Petoskey Waterfront Development
 Petoskey, Michigan



Merit Award, Michigan Chapter,
 Marquette Lower Harbor Study
 Marquette, Michigan

MICHIGAN ASSOCIATION OF PLANNING

Daniel P. Burnham Award - 2015
 Acme Township Master Plan
 Acme, MI

Innovation in Economic Planning
 and Development - 2015
 Lakes to Land Regional Initiative: Food
 and Farm System Assessment

Innovation in Planning - 2014
 Lakes to Land Regional Planning
 Initiative

Daniel P. Burnham Award
 Peshawbestown Master Plan-2013
 Grand Traverse Band of Ottawa
 and Chippewa Indians

Onkama Joint Master Plan -2012
 Onkama, Michigan

Honor Award, Monroe Coastal Zone
 Management Plan
 Monroe, Michigan

Honor Award
 River Raisin Esplanade
 Monroe, Michigan

Honor Award, "Michigan Soil
 Erosion and Sedimentation control
 Guidebook", State of Michigan
 Honor Award, "Housing for the Elderly
 Development Process", Michigan State
 Development Authority

NATIONAL HOME BUILDERS ASSOCIATION

Merit Award, Mill Creek Townhouses
 Ann Arbor, Michigan

BETTER HOMES AND GARDENS AWARDS

Merit Award, Northbury Condominiums
 Ann Arbor, Michigan

INTERNATIONAL DOWNTOWN EXECUTIVES ASSOCIATION

Achievement Award
 River Raisin Esplanade
 Monroe, Michigan

Awards



HUD AWARDS PROGRAM

Honor Award, "Woodcraft Square
Renovation of Former La-Z-Boy
Furniture Factory"
Monroe, Michigan

MISCELLANEOUS AWARDS

Certificate of Award, Downtown
"Tivoli" Proposal, Urban Action
Foundation of Oklahoma City, Inc.



PROGRESSIVE ARCHITECTURE AWARDS PROGRAM

Honor Award, "Michigan Soil
Erosion and Sedimentation Control
Guidebook", State of Michigan
Honor Award, "Housing for the Elderly
Development Process", Michigan State
Development Authority

AMERICAN CONCRETE INSTITUTE

Merit Award, Employee Courtyard,
Catherine McAuley Health Center
Ann Arbor, Michigan



TOLEDO METROPOLITAN AREA COUNCIL OF GOVERNMENTS (TMACOG)

Best Practices Urban Preservation
Award, Monroe Street Corridor Design
& Livability Plan
Toledo, Ohio

THE CITY OF PONTIAC PRIDE & BEAUTIFICATION AWARDS PROGRAM

Outstanding Business Award,
Notre Dame Preparatory & Marist
Academy
Pontiac, Michigan



WASHTENAW CONTRACTORS ASSOCIATION -PYRAMID AWARD

Skyline High School
Ann Arbor, Michigan

MICHIGAN HISTORIC PRESERVATION NETWORK

Cultural Landscape Award -2014
McGregor Memorial Conference Center
Reflecting Pool and Sculpture Garden
for Contribution to Historic Preservation
in Michigan

Professional Affiliations and Organizations

The firm of Beckett & Raeder, Inc. is staffed by registered professional engineers, landscape architects, community planners, and environmental and ecological professionals and has specialized training and maintains professional affiliation with the following:

Accreditations

U. S. Green Building Council LEED Accredited Professionals
Form Based Code Institute (FBCI)
Council of Landscape Architectural Registration Boards
Congress for the New Urbanism Accreditation (CNU-A)

Certifications

Michigan Economic Development Association Certified Economic Development Professional
Certified Stormwater Operator
NCI Charrette System Training
Housing Development Finance Professional (HDFP)
American Institute of Certified Planners (AICP)
Project Management Boot Camp
PASER Road Rating
Planning and Zoning Instructor (MAP)
Certificate of Real Estate

Registrations

Professional Registered Engineers
State of Michigan (PE)

Professional Landscape Architects
State of Michigan (PLA)
State of Ohio (PLA)
State of Illinois (PLA)
State of Indiana (PLA)
Federal Registration (CLARB)

Professional Registered Community Planners
American Institute of Certified Planners (AICP)

Specialized Training

National Charrette Institute
EPA Brownfield Redevelopment
People, Places and Placemaking
Economics of Place
Neighborhoods, Streets and Connections
Form Planning and Regulation
Collaborative Public Involvement
Applied Placemaking
Complete Streets
Geographic Information Systems
FEMA ICS-100, IS-00029, EFS 15
FEMA ICS-200, IS-00700 (NIMS)

Memberships

American Planning Association (APA)
American Society of Landscape Architects (ASLA)
American Society of Civil Engineers (ASCE)
American Public Works Association (APWA)
Congress for the New Urbanism
Detroit Association of Planners
Heritage Ohio (Ohio Main Street)
Institute of Transportation Engineers (ITE)
Michigan Association of Planning (MAP)
MAP Planners in Private Practice
Michigan Complete Streets
Michigan Downtown Association (MDA)
Michigan Economic Development Association (MEDA)
Michigan Historic Preservation Network
Michigan Municipal League (MML)
Michigan Recreation and Parks Association
Michigan Rural Network
Michigan Society of Professional Engineers
National Main Street Center
National Society of Professional Engineers
National Trust for Historic Preservation
Preservation Detroit
Society of Marketing Professional Services (SMPS)
Society of College and University Professionals
South Oakland County Municipal Engineers (SOCME)
Southern Michigan Water and Sewer Utilities Association (SMW & SUA)
Toledo Metropolitan Area of Council of Governments (TMACOG)
Urban Land Institute

Clients

Land Developers

A. C. Investments
Ann Arbor Associates
Beachum and Roeser
Development
Burroughs Farms Development
Canadian Lakes Development
ECHO Development
First Martin Corporation
Fred Greenspan Builders, Inc.
Fochtman Realty Company
Ford Motor Land Development
Corp.
Forest City Dillon
Guenther Building Co.
Holtzman-Silverman Co.
H.S. Landau Builders, Inc.
Kughn Enterprises
Kurkjian Building Co.
Markland Development Co.
Nosan Enterprises
Prudential Insurance Co.
Samelson Development Co.
Smokler Development Co.
The Courtelis Co.
The Taubman Co.
Travis Corp.
Trefice Development Co.
TSM Inc.
Turner Development Co.
W. S. Smith Co.
Westcor Corp.

Counties

Antrim County, Michigan
Benzie County, Michigan
Calhoun County, Michigan
Cook County, Illinois
Emmett County, Michigan
Grand Traverse County, Michigan
Leelanau County, Michigan
Midland County, Michigan
Oakland County, Michigan
Ogemaw County, Michigan
Presque Isle County, Michigan
Saginaw County, Michigan
Washtenaw County, Michigan
Wayne County, Michigan

Cities

Adams, Wisconsin
Adrian, Michigan
Algonac, Michigan
Allegan, Michigan
Allen Park, Michigan

Alpena, Michigan
Ann Arbor, Michigan
Bay City, Michigan
Belding, Michigan
Belleville, Michigan
Benton Harbor, Michigan
Berkley, Michigan
Boyne City, Michigan
Dearborn, Michigan
Defiance, Ohio
Detroit, Michigan
Dewitt, Michigan
Dexter, Michigan
Durand, Michigan
Ecorse, Michigan
East Lansing, Michigan
Eastpointe, Michigan
Escanaba, Michigan
Essexville, Michigan
Farmington, Michigan
Farmington Hills, Michigan
Flint, Michigan
Grandville, Michigan
Garden City, Michigan
Greenville, Michigan
Hamtramck, Michigan
Harbor Springs, Michigan
Highland Park, Michigan
Howell, Michigan
Hudson, Michigan
Inkster, Michigan
Joy-Southfield, Detroit, Michigan
Lansing, Michigan
Lapeer, Michigan
Lathrup Village, Michigan
Livonia, Michigan
Manistee, Michigan
Marlette, Michigan
Marshall, Michigan
Marquette, Michigan
Marysville, Michigan
Maumee, Ohio
Mechanicsburg, Ohio
Milan, Michigan
Monroe, Michigan
Muskegon, Michigan
Muskegon Heights, Michigan
Northville, Michigan
Novi, Michigan
Petoskey, Michigan
Pleasant Ridge, Michigan
Reading, Michigan
Rochester Hills, Michigan
Rogers City, Michigan
Roscommon, Michigan

Roseville, Michigan
Sault Ste. Marie, Michigan
Saginaw, Michigan
Saline, Michigan
Southfield, Michigan
Southgate, Michigan
Tawas City, Michigan
Tecumseh, Michigan
Temperance, Michigan
Toledo, Ohio
Trenton, Michigan
Traverse City, Michigan
Urbana, Ohio
Walled Lake, Michigan
Wayne, Michigan
Westland, Michigan
Ypsilanti, Michigan

Villages

Bear Lake, Michigan
Bellevue, Michigan
Blissfield, Michigan
Chelsea, Michigan
Clinton, Michigan
Deerfield, Michigan
Dundee, Michigan
Frankfort, Michigan
Honor, Michigan
Interlochen, Michigan
Mackinaw City, Michigan
Mechanicsburg, Ohio
Onokama, Michigan
Torch Lake, Michigan

Townships

Acme Township, Michigan
Albert Township
Alpine Township, Michigan
Arcadia Township, Michigan
AuSable Township, Michigan
Bay Township, Michigan
Bear Lake Township, Michigan
Bellevue Township, Michigan
Blaine Township, Michigan
Canton Township, Michigan
Cascade Township, Michigan
Centerville Township, Michigan
Commerce Township, Michigan
Crystal Lake Township, Michigan
Edwards Township, Michigan
Elberta Township, Michigan
Elmwood Township, Michigan
Friendship Township, Michigan
Gilmore Township, Michigan
Glen Arbor Township, Michigan

Grand Blanc Township, Michigan
Green Lake Township, Michigan
Groveland Township, Michigan
Hartland Township, Michigan
Joyfield Township, Michigan
Lake Township, Michigan
Leelanau Township, Michigan
Locke Township, Michigan
Long Lake Township, Michigan
Macomb Township, Michigan
Manistee Township, Michigan
Meridian Township, Michigan
Milton Township, Michigan
Monclova Township, Ohio
Northfield Township, Michigan
Onekama, Township, Michigan
Perrysburg Township, Ohio
Pittsfield Township, Michigan
Pleasanton Township, Michigan
Readmond Township
Star Township, Michigan
Superior Township, Michigan
Sylvan Township, Michigan
Spring Lake Township
Springfield Township, Ohio
Torch Lake Township, Michigan
Tuscarora Township, Michigan
West Bloomfield Twp, Michigan
White Lake Township, Michigan
Ypsilanti Township, Michigan

Governmental

Ann Arbor Transportation
Authority
Atomic Energy Commission
Chippewa County Economic
Development Corporation
Detroit Economic Development
Emmett Township, Michigan
Flint Area Conference
Harbor-Petoskey Airport
Authority
Illinois Department of Agriculture
Michigan Department of
Agriculture
Michigan Department of
Corrections
Michigan Department of
Management and Budget
Michigan Department of Mental
Health
Michigan Department of Social
Services
Michigan Department of Natural
Resources

Michigan Department of State
Police
Michigan Department of
Transportation
Michigan State Housing
Development Authority
Michigan Main Street Center
National Aeronautics and Space
Administration
NorthRiver Development
Corporation
Toledo Metropolitan Area
Council of Governments
United States Department of
Commerce
United States Department of
Defense
United States Postal Service
United States Energy Research
and Development Administration
United States Department of
Transportation
Urban Area Transportation Study
Washtenaw County Road
Commission

Corporations

Acheson Industries, Inc.
Alcoa Aluminum Company of
America
BASF Corporation
Baxter Laboratories, Inc.
B.F. Goodrich Corp.
Brown and Boveri Corporation
Citizen's Gas
Caterpillar Tractor Corporation
Chrysler Corporation
Continental Telephone Company
Detroit Edison Company
Domino's Pizza Inc.
Eaton, Yale and Towne, Inc.
Ford Motor Company
General Electric Corporation
General Motors Corporation
Hallmark Cards, Inc.
IBM Corporation
Iowa Public Service Company
John Deere Corporation
Kellogg Corporation
Little Tikes Corporation
Parke Davis Corporation
Wayne Disposal, Inc.
Westinghouse Electric
Corporation
White Motors Corporation

Wyandotte Chemical Corporation

Institutions and Organizations

Automobile Club of Michigan
Barton Hills Country Club
Beth Israel Congregation
Bhaktivedanta Cultural Center
Blue Cross/Blue Shield of
Michigan
Brighton Hospital
Catherine McAuley Health Center
Jewish Community Center of
Detroit
The Edison Institute
Lapeer General Hospital
Marion Health Center, Marian,
Iowa
Methodist Retirement Homes
Monroe Mercy Memorial Hospital
Mount Hope Memorial Gardens
National Endowment for the Arts
Nazareth Hospital
Northern Council Pentecostal
Church
Phi Gamma Delta Fraternity
Pine Rest Hospital, Grand Rapids
Providence Hospital
St. Joseph Mercy Hospital,
Pontiac
St. Lawrence Hospital, Lansing
Traverwood Village
Travis Pointe Country Club
Washtenaw Country Club
Wayne County Sportsmen's Club

Schools

Ann Arbor Public Schools
Birmingham Schools
Cass Tech Schools
Clawson Community Schools
Cranbrook Educational
Community
Crestwood Community Schools
Dearborn Divine Child High
School
Dexter Community Schools
Fenton Area Community Schools
Ferndale Community Schools
Fowlerville Community Schools
Ford-UAW Childcare Facilities
Garden City Public Schools
Greenhills School
Hanover Horton Community
Schools
Howell Public Schools

Holly Schools
Ionia Public Schools
Jackson Public Schools
L'anse Creuse Schools
Lincoln Park Public Schools
Linden Schools
Manchester Public Schools
Milan Public Schools
Monroe Public Schools
Notre Dame Preparatory and
Marist Academy
Our Lady of Sorrows School &
Church
Paw Paw Community Schools
Petoskey Public Schools
Plymouth Canton Schools
Romulus Community Schools
Rogers City Community Schools
St. Benedicts
St. Fabian Parish and School
St. John the Baptist
St. Patrick School and Church
Saline Public Schools
Southfield Community Schools
South Lyon Community Schools
Starr Commonwealth for Boys
Troy Community Schools
Utica Public Schools
Warren Consolidated Schools
Wayne Westland Community
Schools
Whitmore Lake Schools
Willow Run Schools
Woodhaven Public Schools

Colleges and Universities

Central Michigan University
Eastern Michigan University
Henry Ford Community College
Indiana State University
Lawrence Institute of Technology
Lansing Community College
Michigan State University
Montcalm Community College
Nazareth College
Oakland Community College
Oakland University
Principia College
The University of Michigan-Ann
Arbor
The University of Michigan-
Dearborn
Terra State Community College
The University of Michigan-Flint
Washtenaw Community College

Wayne State University
Wayne County Community
College

Commercial and Entertainment

Bennigan's Restaurant
Bill Knapps Restaurant
Canton Softball Center
Columbia Cable Corp.
Dayton Hudson Company
Detroit Municipal Credit Union
Elias Brothers Restaurants
Great Lakes Bancorp
Holland House Furniture, Inc.
J.C. Penney Company
K-Mart Corporation
Kean's Detroit Yacht Harbor
Little Tykes
Lord and Taylor, Inc.
Manufacturer's National Bank
McDonald's Corporation
Old Kent Bank
Pace Membership Warehouse
Peoples Federal Savings and Loan
of Monroe
Roostertail Supper Club
Sears Roebuck and Company
Standard Securities Corporation
Key Bank (formerly Society Bank)
University of Michigan Credit
Union
Vic Tanny International
WPRI-TV, Providence
WWJ-TV, Detroit
Wendy's International
Zingerman's

Christy D. Summers, PLA, ASLA, LEED AP
Principal, Landscape Architect



Christy has over 20 years of landscape architecture, design and project implementation experience. Christy has been involved in a variety of project types including passive and active recreation design, access to recreation and ADA design, trails and greenways, Placemaking, urban and downtown design, community master planning, corridor study and design, historic site planning, and campus and corporate projects. As a Principal with the firm, her responsibilities include project management, design, construction document preparation, construction administration, and construction observation for both large and small projects. As a LEED Accredited Professional, Christy seeks opportunities to include sustainable design techniques in all of her projects.

EDUCATION

Bachelor of Landscape
Architecture
Michigan State University
East Lansing, Michigan

Master of Landscape
Architecture
University of Michigan
Ann Arbor, Michigan

LICENSES & CERTIFICATES

Licensed Landscape Architect
Michigan, Ohio

LEED Accredited Professional

AFFILIATIONS

American Society of
Landscape Architects

Michigan Complete Streets

Michigan Recreation & Parks
Association

BOARDS & COMMITTEES

MiASLA Past President

University of Arkansas Fay
Jones School of Architecture
Professional Advisory Board

SELECTED EXPERIENCE

Kingsbury Park Redevelopment Plan
Defiance, Ohio

Blackman Urban Park Design & Implementation
Jackson, Michigan

Acme Township Placemaking
Acme, Michigan

Oakland County Parks & Recreation Commission:
Lyon Oaks County Park
Addison Oaks County Park
Groveland Oaks County Park
ADA Master Plan

Sharon Mills County Park
Washtenaw County Parks & Recreation
Sharon Township, Michigan

Petoskey State Park
Petoskey, Michigan

Port Sanilac Downtown & Waterfront Plan
Port Sanilac, Michigan

River Raisin Heritage Corridor-East Master Plan
Monroe County Historical Society, National Park Service,
City of Monroe
Monroe, Michigan

Silver Lake State Park ORV Area
Mears, Michigan

MDNR Recreation Projects:

J.W. Wells State Park Access to Recreation
Brighton State Recreation Area Access to Recreation
Rifle River State Recreation Area Access to Recreation
Dodge #4 State Park Day Use and Boating Access Master
Plan
Silver Lake State Park Day Use and Boating Access Mater
Plan
Waterloo State Recreation Area Fishing Pier and Picnic Area



Caitlin Jackson, PLA, ASLA
Project Professional, Landscape Architect



Caitlin has worked on a variety of project types in her 4 years at BRI including university site development, park design, and corridor revitalization. She has experience in site design, community facilitation, master planning, construction document production, plant materials, cost estimating, hardscape detailing, three-dimensional modeling, and photo manipulation. She is a Certified Charette Planner through the National Charrette Institute in Charrette System Planning.

EDUCATION

Bachelor of
Landscape Architecture
Michigan State University
East Lansing, MI

LICENSES & CERTIFICATES

Licensed Landscape Architect

Certified Charrette Planner
National Charrette Institute

AFFILIATIONS

American Society of
Landscape Architects

American Planning
Association

Michigan Chapter of the
American Society of
Landscape Architects
Secretary

Michigan Chapter of the
American Society of
Landscape Architects
Golf Outing Committee

SELECTED EXPERIENCE

River Raisin Heritage Corridor East Master Plan
Monroe County Historical Society, National Park Service
Monroe, Michigan
*Merit Award, Michigan Chapter of American Society of
Landscape Architects – 2013*
*Honor Award, Michigan Historic Preservation Network –
2015*

**Acme Township Placemaking, Master Plan, and Parks
& Recreation Plan**
Acme Township, Michigan
*Daniel Burnham Award for a Comprehensive Plan,
Michigan Association of Planning – 2015*

Michigan Avenue Streetscape
Jackson, Michigan

Downtown Urban Park
Jackson, Michigan

Monroe Parks & Recreation Plan
Monroe, Michigan

Pittsfield Township Parks & Recreation Plan
Pittsfield Township, Michigan

Parks & Recreation Master Plan
Pleasant Ridge, Michigan

State Street Corridor Improvement Study
Saginaw, Michigan

Mellus Park Conceptual Design
Lincoln Park, Michigan

MSU Special Housing Needs
Spartan Village Redevelopment
East Lansing, Michigan

Midland Farmers Market Place Plan
Midland, Michigan

Traverse City Farmers Market
Traverse City, Michigan



Leah DuMouchel, AICP, NCI, FBCI
Associate



Leah DuMouchel's planning experience includes innovative master planning projects and extensive community engagement. Her work coordinating project leadership teams, creating outreach materials, facilitating community engagement and visioning sessions, developing and administering surveys, implementing online communication channels, and conducting all manners of analysis provides the solid foundation for writing plans that genuinely reflect and serve their communities. From her previous career in journalism, she brings a polished, varied writing style and a sharp eye for "the whole story."

EDUCATION

Masters of Science
Urban and Regional Planning
Eastern Michigan University

Bachelor of Arts
Philosophy
University of Michigan

SELECTED EXPERIENCE

**Lakes to Land Regional Initiative –
Food Innovation District**

Implementation project studying agricultural assets across Benzie and Manistee Counties
Innovation in Economic Planning and Development Award – Michigan Association of Planning, 2015

Acme Township Master Plan

Character-transforming plan realigns two state highways to create a walkable, beach-accessible business district.

Acme Township, Michigan

Daniel Burnham Award for a Comprehensive Plan – Michigan Association of Planning, 2015

CERTIFICATIONS

Certified Planner, American
Institute of Certified Planners

Certified Charrette Planner,
National Charrette Institute

Form-Based Code Institute

Lakes to Land Regional Initiative

Collaborative Master Plan for sixteen communities in Benzie and Manistee Counties

Innovation in Regional Planning Award – Michigan Association of Planning, 2014

AFFILIATIONS

American Planning
Association, Michigan
Chapter

Detroit Association of
Planners

Acme Shores Placemaking Project

Shoreline redevelopment plan for public parkland emphasizing low-impact development practices and water quality preservation

Acme Township, Michigan

TEACHING EXPERIENCE

MiPlace Partnership
Curriculum

Michigan Association of
Planning Conference

City of Jackson Master Plan

A rethinking of land use and asset capitalization in this post-industrial, mid-sized city
City of Jackson, Michigan

Designing and Achieving Our Potential!

Waterfront redevelopment plan with extensive community engagement

Northport Village and Leelanau Township, Michigan

Pleasant Ridge Community Master Plan

Master plan supports Historic Register neighborhoods and offers a multimodal, mixed-use vision for Woodward Avenue
City of Pleasant Ridge, Michigan



Kristofer Enlow, P.E.
Senior Civil Engineer



Mr. Enlow has over 15 years of experience in public and private site development, contract documents, and construction administration, including 2 years at Beckett & Raeder, Inc. He has been involved early in the planning of significant projects providing guidance and cost estimating on long range development, and infrastructure to support future development. He plans infrastructure systems including: water, sanitary, storm water management, road design, trail design, and open space for recreation and leisure. He is versed in sustainable practices and employs green design solutions focused on protection of natural and cultural resources.

EDUCATION

Bachelor of Science in Civil
and Environmental
Engineering
University of Michigan

Master of Business
Administration
Wayne State University-
Detroit, Michigan

REGISTRATIONS

Licensed Professional
Engineer
State of Michigan

Certified Storm Water
Management Operator

PASER Road Rating

AFFILIATIONS

American Public Works
Association

South Oakland County
Municipal Engineers (SOCME)
Board Member 2007-Present

Charter Township of Lyon
Planning Commissioner

SELECTED EXPERIENCE

Buhr Park
Ann Arbor, Michigan

Friendship Park
Orion Township, Michigan

Pontiac Trail Bike Path (250 feet)*
Lyon Township, Michigan

Fieldcrest Pathway (1.25 miles)*
Green Oak Charter Township, Michigan

Geddes Road Trail (1.25 miles)*
Superior Township, Michigan

Polly Ann Trail Extension (3.5 miles)*
Charter Township of Orion, Michigan

Woodland Correctional & Lemen Road Pathway (2.0 miles)*
Green Oak Charter Township

Clark Road Non-Motorized Trail (0.50 miles)*
Superior Township, Michigan

Cass River Fish Passage Pathway Modifications
Frankenmuth, Michigan

Riverine Pathway
Frankenmuth, Michigan

MacArthur Non-Motorized Trail (0.50 miles)*
Superior Township, Michigan

2010 Safety Path Project (five small trail segments)*
Charter Township of Orion, Michigan

Municipal Engineer General Services

Hartland Township: 2010 – present
Charter Township of Orion: 2008 – 2010
Groveland Township: 2007-2010
Green Oak Charter Township: 2012-2014
City of Farmington Hills: 2002-2006

**Work performed outside of Beckett & Raeder, Inc.*



Lower Harbor Non-Motorized Trail

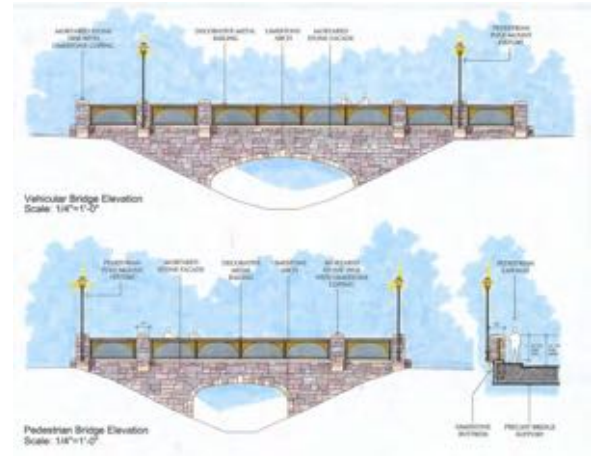
Marquette, Michigan

The findings of the Marquette Lower Harbor Study identified the opportunities available to the community to utilize this former Central Wisconsin railyard and industrial site for a mixed use development. In response to the study, City officials, in conjunction with Beckett & Raeder, Inc. put in place an implementation program for the property.

A key element of the adopted site master plan was the inclusion of an ADA accessible and multi-purposed shared pathway to Lake Superior, and the retention of land along the shoreline of Lake Superior and the Whetstone Creek as public open space.

Access through the property was accommodated by a three-tiered system of routes: a new road for vehicular traffic, a shared pathway, and a pedestrian walkway. Each route needed to cross the Whetstone Creek, which prior to the project execution was encapsulated in a large storm sewer. Once the Whetstone Creek was "daylighted" bridges were erected for the extension of Lakeshore Drive, the shared pathway along Lake Superior, and the pedestrian walkaway along the Whetstone Creek.

Beckett & Raeder, Inc. worked with the City of Marquette on the procurement and implementation of a Transportation Enhancement Grant administered through MDOT. Today, the Lower Harbor is used by residents and visitors, and has been referenced by the Governor's Office as a model project for Michigan's new economy.



J.W. Wells State Park MDNR Access to Recreation Project Escanaba, Michigan

Beckett & Raeder, Inc. was retained by the Michigan Department of Natural Resources (MDNR) to provide design and engineering services for an Access to Recreation project at J. W. Wells State Park, near Escanaba, Michigan. The Access to Recreation program encourages universal design, going above and beyond the Americans with Disabilities Act (ADA), to promote increased recreational access to people with disabilities through design solutions that accommodate people of all ability levels.

The playground feature is Universally designed and also accessible by wheelchairs. One of the wheelchair ramps is installed over the river bed. The stones along the river bed act as a transfer device into the river bed. Irrigation misters installed into the dry river bed are an added play feature. Custom panels were placed to help identify the location of the State Park in relation to the state of Michigan and the great lakes.

The trail connection linked the campground with the under utilized day use area. Beginning at the campground, the trail leads away from the historic building and into the wooded area along the drainage stream. The path links elements such as the pavilion structure, beach access, horseshoe pits, totem pole, playground and parking area. In the day use area, the sidewalk was realigned to address safety considerations of cyclists biking to and through the picnic pavilion.

The path material is stabilized gravel in the upland areas and floating boardwalk in any wet or sensitive locations. The floating boardwalk surface was proposed due not only to the sensitivity of the site, but also to alert users to this fragile ecosystem.



Ashmun Bay Park

Sault Ste. Marie, Michigan



Beckett & Raeder, Inc. was retained by Sault Ste. Marie to develop a long-range master plan for Ashmun Bay Park. The park is nestled between Ashmun Bay and the Edison Sault Electric Company power canal and consists of 50 acres of mostly undeveloped property with over 5,000 feet of shoreline along the St. Mary's River. The site is relatively flat and contains woodlands, wetlands, meadow and the mouth of Ashmun Creek.

The master plan process included community wide visioning sessions to gain valuable insight as to how the park is currently used and what vision the community has for the future of the park. The master plan includes facilities for both passive and active recreation and non-motorized trail connections (including snowmobiles during the winter season). The proposed improvements include universal access to all recreation elements including updating the boat launch and trailer parking area including restrooms, a fish cleaning station, an accessible fishing platform, a children's fishing pond, a pier and overlook. Another highlight is the adaptive reuse of the Old Fort Street Bridge. The bridge is integrated in the non-motorized trail system as a separated non-motorized crossing of the main vehicular route in the park. The trail system continues the length of the park with a series of paths and boardwalks that provide access to scenic overlooks along Ashmun Bay. This trail connection also provides snowmobile access in the winter months. An amphitheater, band shell, restrooms, and children's play area are located in the central part of the park, providing a location for community activities and events.

Marshbank Park

West Bloomfield Township, Michigan

2011 Michigan Recreation & Parks Landscape Design Award

Oakland County Oak Land Award 2012

2013 Great Lakes Park, Facility & Recreation Program Award for Green Infrastructure



Marshbank Park, a 101-acre waterfront park located on Cass Lake in West Bloomfield Township, includes wetlands, wooded wetlands, wooded uplands and open fields of rolling topography. The existing park provided no access to the lake and was used primarily for walking trails, picnicking, informal play fields, and playground activities. The West Bloomfield Parks and Recreation Commission submitted and was the recipient of a Michigan Department of Natural Resources Trust Fund Grant. Beckett & Raeder, Inc. was retained to provide an overall master plan for the park, and subsequent to the approval of the master plan, design development through construction administration for all proposed site improvements. Public input was gathered through a number of public meetings, including a public meeting held by the MDEQ prior to approval of the permit. Park improvements include a waterfront boardwalk,

floating, accessible fishing pier, canoe/kayak launch with transfer device, multi-use trails, a universal designed playground with safety surfacing, a group picnic shelter, a shade shelter at the playground, a seasonal toilet building with screened-in-porch overlooking the waterfront, a group activity building, a maintenance facility, renovated ball fields and sledding hill, and all associated parking, roads, and utilities. Access to all facilities has been provided. Green design practices were incorporated into the project including bioswales, pervious paving, roof water harvesting, geothermal heat, and native plantings. The project budget was \$5.4 mil, and bids received were within budget. Gary Cooper of Cooper Design, Inc. was the architect on the project.

Petoskey Waterfront

Petoskey, Michigan

Bayfront Park is the primary feature and activity center of the Petoskey waterfront. The major goal of the park development was to provide increased public access to Little Traverse Bay and to establish an effective pedestrian and functional linkage between the waterfront and the renowned downtown "Gaslight" shopping district. Improvements to the park were funded primarily by local sources through the Petoskey Tax Increment Finance Authority, with projected State of Michigan participation through the Waterways Division and Recreation Services Division of the Department of Natural Resources and a total project commitment of up to five million dollars.

Main features of the park include a central promenade linking the downtown to the City pier, marina and waterfront walkway, waterfront playground, softball tournament field, rivermouth boardwalk, new City Hall and Public Service Buildings, open picnic and activity greens, and arboretum. Services provided by our firm included design, engineering and construction administration for all park facilities, roads, utilities, shoreline stabilization, and the pedestrian tunnel linking downtown to the waterfront park under the highway.

Beckett and Raeder, Inc. has served as the design and engineering firm on all waterfront projects since the inception of the waterfront master plan in 1979 - 1980. Since that time over thirty projects have been implemented consistent with the original concept for the waterfront area.



1992 Honor Award for Waterfront Development
2014 Merit Award for Historic Significance
Michigan Chapter of the American Society of Landscape Architects

B R i
Beckett&Raeder
Landscape Architecture
Planning, Engineering &
Environmental Services

Bear River Valley Recreation Area Petoskey, Michigan

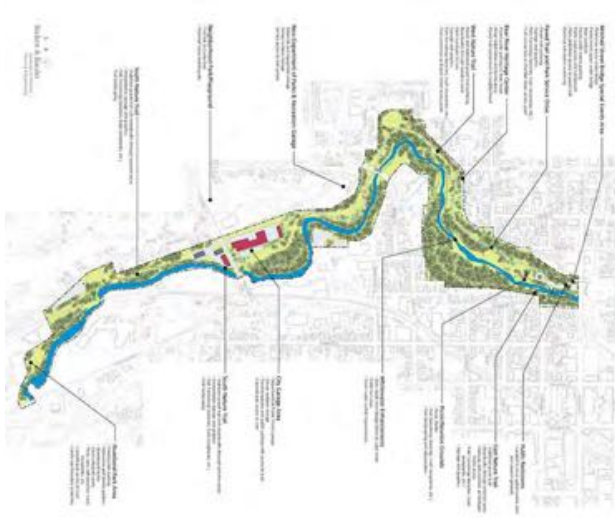
The opportunity to move ahead with improvements to the Bear River Valley represented the culmination of years of planning and programming which began in the early 1980s with the Bear River Valley Recreation Area Development Strategy. Future funding potential was identified and put in place with the 1985 Tax Increment Finance District and Plan which included the Petoskey waterfront from Magnus Park to the Arboretum and the Bear River Valley to Riverbend Park.

Programming for improvements and features in the valley was outlined in the Tax Increment Finance Development Plan update of 2004 and was subsequently confirmed as a future project in the 2008 - 2012 Petoskey Parks and Recreation Five Year Master Plan.

The basic concept was to enhance public opportunities to access the valley through adjacent street improvements, including public parking by creating specific entrance points with stairs and ramps to access the valley floor and its system of trails and recreational features. For the most part, the valley floor including the Bear River was left in its natural state. At selected points, special features such as picnic shelters, river overlooks, wetland boardwalks, etc are provided. Except for minor penetrations and parking at Quaintance Street, Sheridan Street and Riverbend Park, motorized traffic in the valley is restricted to occasional service and maintenance equipment on the main trail. The main trail from Quaintance to Sheridan is a 10' wide, hard surfaced and universally accessible to allow persons with all mobility ranges to experience the full length of the valley floor. Likewise, all facilities in the valley floor are barrier free.

Side trails in other areas of the valley and valley walls consist of shredded bark natural trails, stabilized aggregate trails and hard surfaced trails connecting the main trail to the many valley entrances. Boardwalks were developed where the trails traverse wetland areas. Certain existing trail segments are part of the multi-state North Country Trail and are so designated with signs and markers.

There are several large open grass areas that can accommodate group gatherings. The Reunion Grounds south of the Mitchell Street Bridge is a lower level plain suitable for informal recreation and games. Improvements include a picnic shelter with fireplace and a public restroom facility.



B R i
Beckett&Raeder
Landscape Architecture
Planning, Engineering &
Environmental Services

Waldenburg Park

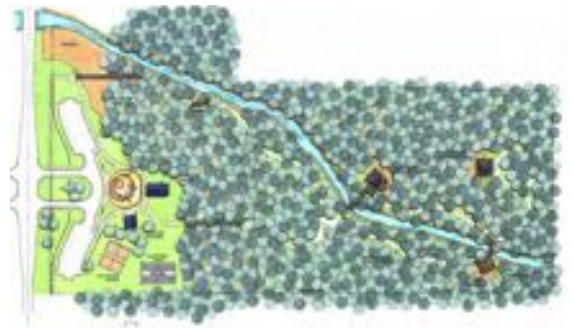
Macomb Township, Michigan

2003 MASLA Merit Award & 2003 MRPA Landscape Design Award

Macomb Township retained the team of Beckett & Raeder, Inc. and Cooper Design, Inc. to develop a Master Plan for a park on the north side of 21 Mile Road east of Romeo Plank Road. The challenge was to find an environmental balance between recreation activities and preservation of the wooded wetland and riparian edges, which comprise 80% of the site. Active facilities are located only in the portions of the site above the 100-year floodplain and include an ADA accessible children's play structure with state-of-the-art solid surfacing, basketball courts, volleyball courts, an ADA accessible picnic pavilion, and restroom building.

On the more sensitive portions of the site, extensive pathways meander the sites' natural woodland setting. The path crosses over wetlands and the Middle Branch of the Clinton River via pedestrian bridges and boardwalks. For local school and scouting groups, overlooks with pavilions provide sheltered areas for small group interpretive sessions, as well as resting points along the trail. The path system is planned to provide future connection to the regional bike trail and is fully accessible.

To buffer the busy adjacent roadway the frontage of the park features low limestone screen walls, custom designed fencing, signage and landscaping that diffuse roadway noise, protect users and add color to the parks entryway. The park also provides a 55-car parking lot with barrier free parking. The park is barrier free and is extensively used by the residents of Macomb Township throughout the year.



Bloomer Park

*White Lake Township, Michigan
MRPA 2014 Landscape Design Award*



The Bloomer Park property is 28 acres of stunning beauty. Dramatic topographic features in the park include tall bluffs along Grass Lake, several glacial kettle wetlands, and rolling upland hills. While State Park status protected the park from development and preserved its spectacular ecosystems for many years, the park began falling into disrepair beginning in the 1970s as State budgets dwindled. Eventually, all the State Park amenities were removed and the park was largely forgotten.

White Lake Township's purchase of the property became an opportunity to re-envision it as a recreational asset. After decades of neglect, Township residents cast a vision for the property as a "natural area" park with passive recreational uses. With the assistance of Beckett & Raeder, the White Lake Township Parks and Recreation Committee held community meetings to guide development of a detailed plan for the park sensitive to its natural features.

Construction began in late Summer 2012 and was completed in Spring 2013. The end result spectacularly achieves its goal of complimenting the park's natural features. Improvements included universally accessible limestone fines paths, benches and interpretive panels, a picnic shelter, and an overlook platform where visitors can enjoy the experience of being out over the water, relaxing on the benches or trying their luck at the universally accessible fishing area. Other improvements included vehicular parking and trail surfaces that are permeable and universally accessible limestone. Any storm water that runs off the permeable parking area is directed to an infiltration bioswale. The park improvements also feature natural timber and fieldstone construction harkening back to State Park aesthetics defined by local materials.

Sharon Mills County Park

*Washtenaw County Parks and Recreation Commission
2003 MRPA Landscape Design Award*

The Washtenaw County Parks and Recreation Commission retained Cooper Design, Inc. and Beckett & Raeder, Inc. to evaluate an historic Henry Ford mill for adaptive reuse as an interpretive display and county park. The site is situated in Sharon Township, along the River Raisin and is almost entirely within the 100-year flood plain, with much of the site being wooded wetland. Beckett & Raeder and Cooper Design architects prepared both the master plan as well as the detailed design and construction drawings for the project.

The master plan included restoration of the mill, the machine shop, as well as the dam overlook and footbridge. Additionally, parking for twenty cars, two pedestrian bridges, a custom pergola and brick terrace for outdoor weddings, a custom Greek Revival influenced picnic shelter, canoe take-outs and launches, a custom Greek Revival restroom building and a brick visitor terrace were incorporated into the plans.

Renovating this park and its facilities to provide barrier free access was a challenge as the site had rolling topography and the Historic Mill contained five different levels. It was determined that an elevator could not service each of the floors, as at times they were only separated by a few feet. Every effort was made to provide accessible routes from the parking to the various park elements including the interpretive displays.

The challenges presented by this project were many faceted, including barrier free access, wetlands, floodplain, difficulty obtaining adequate sight distances for drive approaches, as well as finding suitable soils to support a septic field for the existing building, and new park restroom building. Perhaps the biggest challenge of all was accommodating the restrictions placed on the site by the DEQ, DNR, and County Road Commission, while still protecting the historic character of the site and buildings. Due to the diligence of the County Park Commission, the mill will be appreciated for generations to come.



Hickory Woods Park

Pittsfield Township, Michigan

Hickory Woods Park located in Pittsfield Township was a former golf course surrounded by residential neighborhoods. The park is predominantly open rolling terrain with a hickory woodlot on the northern portion of the site. Beckett & Raeder, Inc. along with team member, Cooper Design, Inc., was retained by the Township to develop a park master plan, submit for a Michigan Department of Natural Resources Trust Fund Grant, and prepare design and engineering drawings for the implementation of the Phase I and Phase II improvements.

Public workshops were held during the master plan phase of the project to identify desired park elements and priorities. Improvements include multi-use trails, picnic facilities, a restroom/storage facility, playgrounds, parking lot, informal play fields, bio retention areas, improvements to an existing irrigation pond for storm water management and native plantings for attraction of wildlife.

The park is open to the public for use year-round. It has over 2 miles of trails, both paved and unpaved, winding their way from the park entrance, through woodlots and prairie and around a pond. Trail entrances connect the park to nearby neighborhood, providing a more convenient access point for neighbors to enter and use park facilities. The project was completed in 2012.



Lyon Oaks County Park Phase I Development

Lyon Township, Michigan

Beckett & Raeder, Inc. was retained by the Oakland County Parks and Recreation Commission to prepare a Master Plan for its newly-acquired Lyon Oaks County Park, an undeveloped site comprised of richly diverse forest, open areas and wetlands. After successful completion and adoption of the Master Plan, the OCPRC commissioned BRI to continue with the implementation of Phase I.

Phase I of the project involved the development of the golf and banquet center, the golf course maintenance facility, the day use picnic park, site roadway and parking, and all site utilities infrastructure including a storm water management plan for the more intensely developed portions of the site. The storm water management facilities were developed utilizing green design where possible, to cleanse and cool the water before it reaches the retention ponds, constructed to store two back-to-back 100 year storm events. State of the art on-site sewage disposal systems, designed with aerobic pre-treatment of kitchen waste, were utilized to service the banquet facility, which was designed to seat 350 guests.

As a separate, but coordinated project concurrent with BRI's work, OCPRC commissioned Arthur Hills/Steve Forrest Associates to implement the first phase of the golf course, 18 of the 27 holes master planned by BRI. BRI and AH/SF collaborated on the interface between the course and park/building development. Site features, such as the retention ponds, were developed to not only serve their functional purpose, but also to act as aesthetic features and hazards for the golf course. The irrigation system was developed to serve both the course and the building development, and was supplied by the northern pond, constructed to adequately serve the park at build out.

Given the diversity and quality of the wetland, conservation easements were executed for their protection prior to any construction being allowed on the site. Development of the site was concentrated in the open areas and along the forest edges, leaving approximately 50% of the site undeveloped, allowing Lyon Oaks to remain one of the most pristine of Oakland County's parks.



Dodge Park V Master Plan

Commerce Township Michigan

The Charter Township of Commerce hired Beckett & Raeder, Inc. to provide a Master Plan for development and use of their property known as Dodge Park V. Dodge Park V is a 106 acre park located in Oakland County.

The Master Plan process included collection of all background data; site analysis and assessment; and conceptual development of alternative use plans. Features to be included in the final master plan include points of access, park circulation, park furnishings, parking, park lighting, building placement, active/passive recreation areas, picnic area, winter use, landscaping, ADA accessibility, signage/interpretive opportunities, utility extensions, a development timetable, cost estimates and project phasing.

Beckett & Raeder, Inc. prepared construction drawings for Phase I, including 2 soccer fields, play area, picnic shelter, multi-use paths, parking and roads.



Muskegon Lakeshore Trail

Muskegon, Michigan

Michigan Recreation and Parks Design Award

The Muskegon Lakeshore Trail is a comprehensive plan adopted by the City of Muskegon to develop a linked trail system over twenty-three miles.

The premier component of the trail system is the design and construction of an elevated coastal dune boardwalk along Lake Michigan.

Beckett & Raeder, Inc. was commissioned by the City of Muskegon to prepare the design, construction drawings and specification, and perform the construction administration for this project. Also included in the project was the preparation and approval of a coastal dune permit through the Michigan Department of Natural Resources.

This project was funded by local appropriations as well as matching funds from the Michigan Department of Natural Resources Land Trust Program and the Michigan Department of Commerce Equity Grant Program.



City of Defiance and Defiance Development & Visitors Bureau
Defiance, Ohio

The Kingsbury Park Master Plan dramatically shifts the user experience of the park by making the river central to the park experience. In the past, a road followed the river's edge and pushed pedestrians back to the middle of the park. The master plan creates a waterfront walkway that allows visitors to experience the riverfront without vehicular conflicts. The park paths lead to a proposed "tridge", a tri-spanned bridge that would connect Kingsbury Park to Old Fort Defiance Park and Pontiac Park at the confluence. Viewing platforms, a volleyball court that transforms to ice skating in the winter, picnic shelters, rain gardens, and an accessible canoe and kayak launch are located along the path. The center of the



site has been reconfigured to include an expanded 289-space parking lot and a turnaround for easy access to the community pool, baseball field, playscape, and a multi-purpose pavilion that can be used for anything from picnics to performances to a farmers market. Other improvements include a community garden and greenhouse on the southeast side of the park that provides the opportunity for community members to harvest their own produce, and site lighting throughout improves safety and increases usability for evening events.

Gainsboro Park Renovation Plan

Pleasant Ridge, Michigan



The current park facility is a 2,000 foot linear arrangement with the city Department of Public Works facility centrally located in the park and thus separating the north and south ends of the facility. Removing the DPW facility will allow the opportunity to develop a cohesive neighborhood park. The new park is designed with an Activity Center centrally located, passive activities located to the north and active elements located to the south. Project components consist of a new Activity Center with an adjacent ice skating rink, basketball court, tennis courts, youth soccer field, playground areas, restroom facility, performance facility and amphitheater, open lawn areas, continuously connected walkways, fitness trail system, windmill, landscaping and site lighting.

MDNR Silver Lake State Park Day Use & Boating Access Site Master Plan

Mears, Michigan



Silver Lake State Park is located in western Michigan along the Lake Michigan shoreline, and is comprised of nearly 3,000 acres of sand dunes and mature forests. The park, with an impressive annual attendance of 800,000 to 900,000 users, is an excellent resource for both land and water recreation activities.

The Silver Lake State Park project sought to make improvements to the day use experience and Boat Access Site (BAS) functionality by master planning site circulation, parking and day use elements, while considering accessibility and natural feature preservation.

The preferred design alternative accomplished the DNR's goals for the site by relocating the park entry and developing a circuitous entrance drive allowing for stacking of campers off the main roadway, and also allowing for day users and BAS users to access their respective destinations without passing the registration station. The design minimizes the conflict and conges-

tion resulting from all user groups being routed in the same direction, yet still allows for a single park entry point, which is most effective for the park to manage.

The design relocates the BAS to the far northern area of the site onto recently acquired land instead of its current centralized location between the campground and the day use area. This allows the day use area to be expanded and consolidated along the waterfront to maximize access to Silver Lake. The new design affords campers access to an expanded beach area and new playground, unencumbered by vehicular conflict.

The design maintains a mature wood lot and creek between the BAS and day use area, as well as maintains a generous buffer of tree plantings adjacent to the roadway to reinforce the natural character of the State Park.

Brighton Recreation Area Access to Recreation Loop Trail

Brighton Michigan

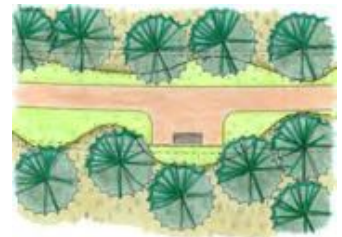
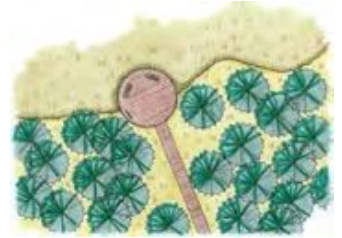
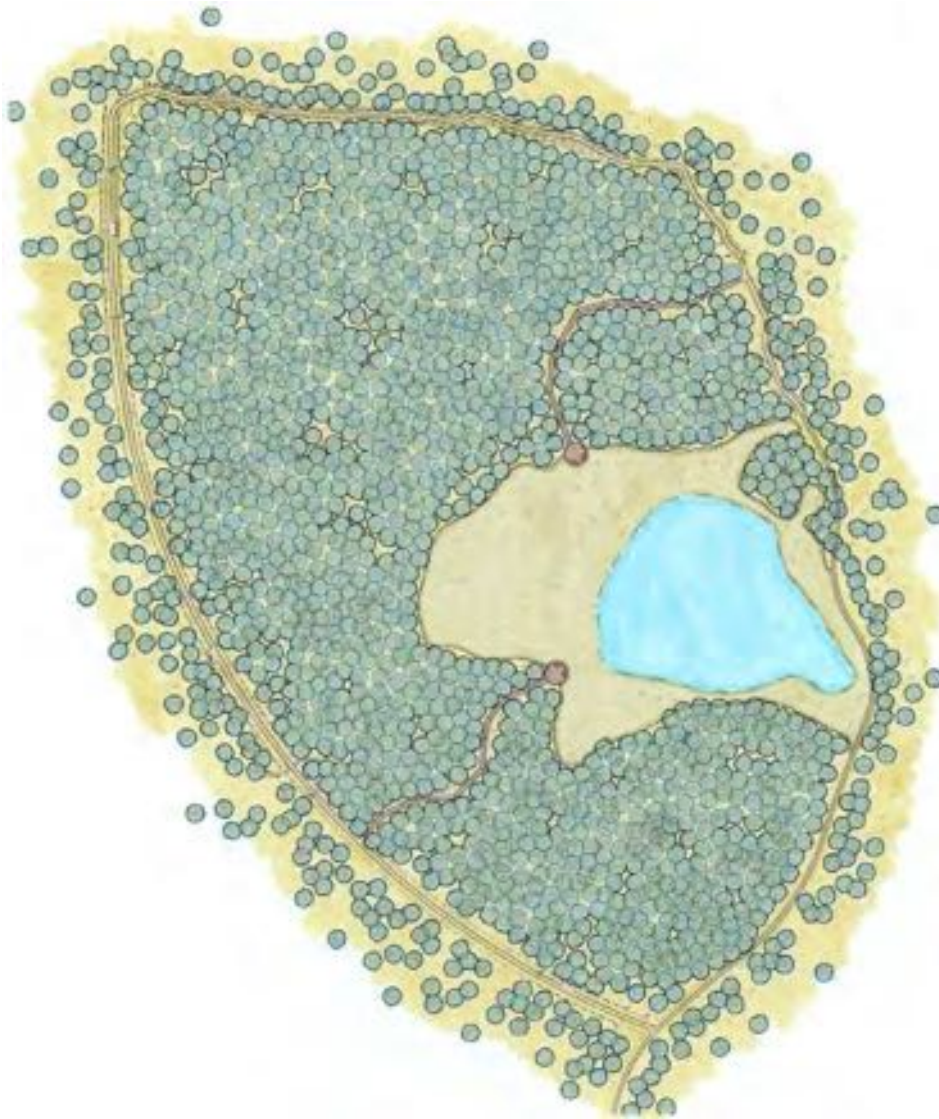


Beckett & Raeder, Inc. was retained by the Michigan Department of Natural Resources (MDNR) to provide design and engineering services for an Access to Recreation project at Brighton State Recreation Area, near Brighton, Michigan. The Access to Recreation program encourages universal design, going above and beyond the Americans with Disabilities Act (ADA), to promote increased recreational access to people with disabilities through design solutions that accommodate people of all ability levels.

The Loop Trail circumnavigates Bishop Lake connecting

the existing Day Use, Campground, and Organizational Camping. The trail is designed to allow universal access to the interesting topography, views and natural features of the lake, which is in very close proximity to the large population base in southeast Michigan. County topography and soils maps assisted BRI in the designation of the route and varied trail materials utilized, as required by the distinctive environments being traversed. The Canal Fishing & Observation Platform is located as a spur off the trail in order to gain access to deeper water yet not conflict with the pedestrians on the trail.

Rifle River Recreation Area Access to Recreation Pintail Pond Northern Fen *Lupton, Michigan*



Beckett & Raeder, Inc. was retained by the Michigan Department of Natural Resources (MDNR) to provide design and engineering services for an Access to Recreation project at Rifle River State Recreation Area, in northern lower Michigan. The Pintail Pond trail is a complete loop trail system around the fen with overlooks.

The project consisted of modest grading and site manipulation to comply with accessibility requirements,

using gravel surface at grade. To provide interest and occasional access to the unique ecosystem of the fen, two overlook areas were designed leading toward the open water area from the proposed loop. Access to the overlooks required construction of raised and floating boardwalks in sensitive cedar wetland.



Community Parks, Trails & Recreational Spaces



123 W Front Street
Traverse City, MI

www.gfa.tc



Tuscarora Township Greendocks Rehabilitation



Qualifications



HISTORY

For nearly 70 years Gourdie-Fraser has been honored to serve clients throughout northern Michigan. This experience extends through our voluminous historical surveying records, extends to our company principals (many of whom have 30+ years of experience each), and translates into streamlined projects to save you and your community time and money during the design and construction process. GFA's teams know what it takes to get the job done, and once a project proceeds to construction our veteran construction observation crew will work to make sure residents are informed and accommodated until the site is fully restored and ready to enjoy. After all, we're residents too!

The projects represented here illustrate GFA design experience with many types of park and recreation facilities as well as other projects with aesthetic and recreational elements including small trail systems, trailheads, bathhouses, and parking areas. This experience includes grant application assistance and administration.



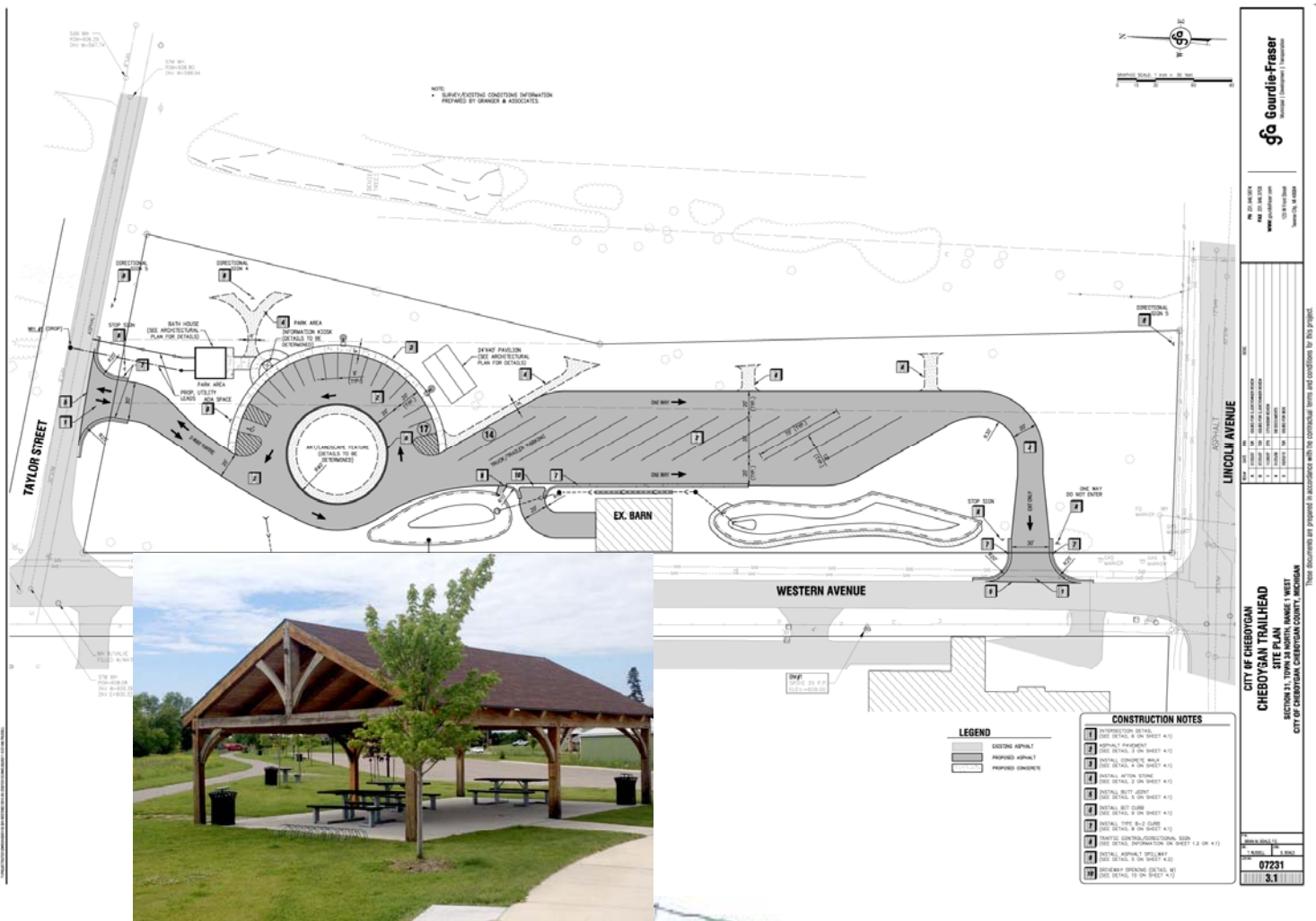
GFA volunteers assembling a playstructure in Elmwood Township Park on a rainy summer afternoon.





River's Edge Redevelopment (Traverse City, MI)

This \$100M redevelopment project (partially funded by grants) at the Traverse City former iron foundry site presented a design challenge—blending a more modern mixed-use development into the historic downtown area of Traverse City. The brick on the buildings was matched to the sidewalk and crosswalk pavers, and the streetlights blend throughout the downtown. Much of the work on this site took place from the water, and included a riverwalk (shown at left) and a small marina on the Boardman River (shown below).



City of Cheboygan Trailhead (near W. Lincoln Avenue, S. Western Avenue, and Taylor Street) - Cheboygan County, MI

This new trailhead area includes parking, trails, restrooms, and more. Services included final design and construction engineering. It is slated for construction in 2010. Throughout the design process, the engineering team worked in close coordination with the City of Cheboygan and the Michigan Department of Natural Resources & Environment (MDNRE).



Universal Accessibility

The park project below are a few examples of universal accessibility in waterfront recreation areas. Lake Ann Waterfront Park, features permeable paving for improved stormwater management as well as universally accessible design. The Torch Lake launch, which GFA designed to make a very tight challenging site universally accessible, allows for non-motorized lake access.



Above:
Lake Ann
Park



Left:
Torch
Lake Non-
Motorized
Launch



Complex Sites

GFA often works on complex sites, such as the GT Commons and the Munson campus. Here you can see examples of permeable paving, a bike pavilion, and other treatments.





Munson Campus Kid's Creek Restoration (Grand Traverse County, MI)

Several years prior to the execution of the Tributary A Restoration and Relocation project, we completed a feasibility analysis which included evaluating design alternatives, and identifying regulatory requirements that would pose challenges to this project. This created recreational greenspace in the heart of the campus, while allowing room for the cancer treatment center currently under construction. The project ultimately resulted in the relocation and restoration of approximately 1,200 lineal feet of a tributary to Kid's Creek and provide for nearly double the volume of flood water storage.





Garfield Township East Silver Lake Park (Grand Traverse County, MI)

This new park area includes parking, trails, restrooms, picnic pavilions, basketball courts, baseball diamonds and a sledding area. The GFA engineering team collaborated with the Township on preliminary design, final design and construction engineering.





Bartlett Road (VASA) Park (Acme Township, MI)

This popular park area is used by hikers in the summer and skiers in the winter. It provides access to jump on the VASA trail. It is planned to include two baseball/softball fields, soccer field, tennis courts, walkways, landscaping, parking, and access roads. Services included master plan for park area, as well as final design and construction engineering for first phase.



Frankfort-Elberta Beach to Beach Trail

This roadside non-motorized, recreational trail was developed for walking, jogging, biking, and more. Services included grant administration, surveying, route selection, plan development assistance, and design plan preparation. The trailway is four miles long. The photo above shows the cantilevered bridge GFA designed to allow fishing and nature study.





North Missaukee ORV Trailhead (Missaukee County, MI), Client: State of Michigan DMB/DNR

This trailhead reconstruction involved new access drives to/from the roadway, a new access point and directional fencing to the trail, a vault toilet, landscaping and other improvements. GFA provided design engineering, construction oversight and materials testing services for this project.



Betsie Valley Trail (Benzie County, MI)

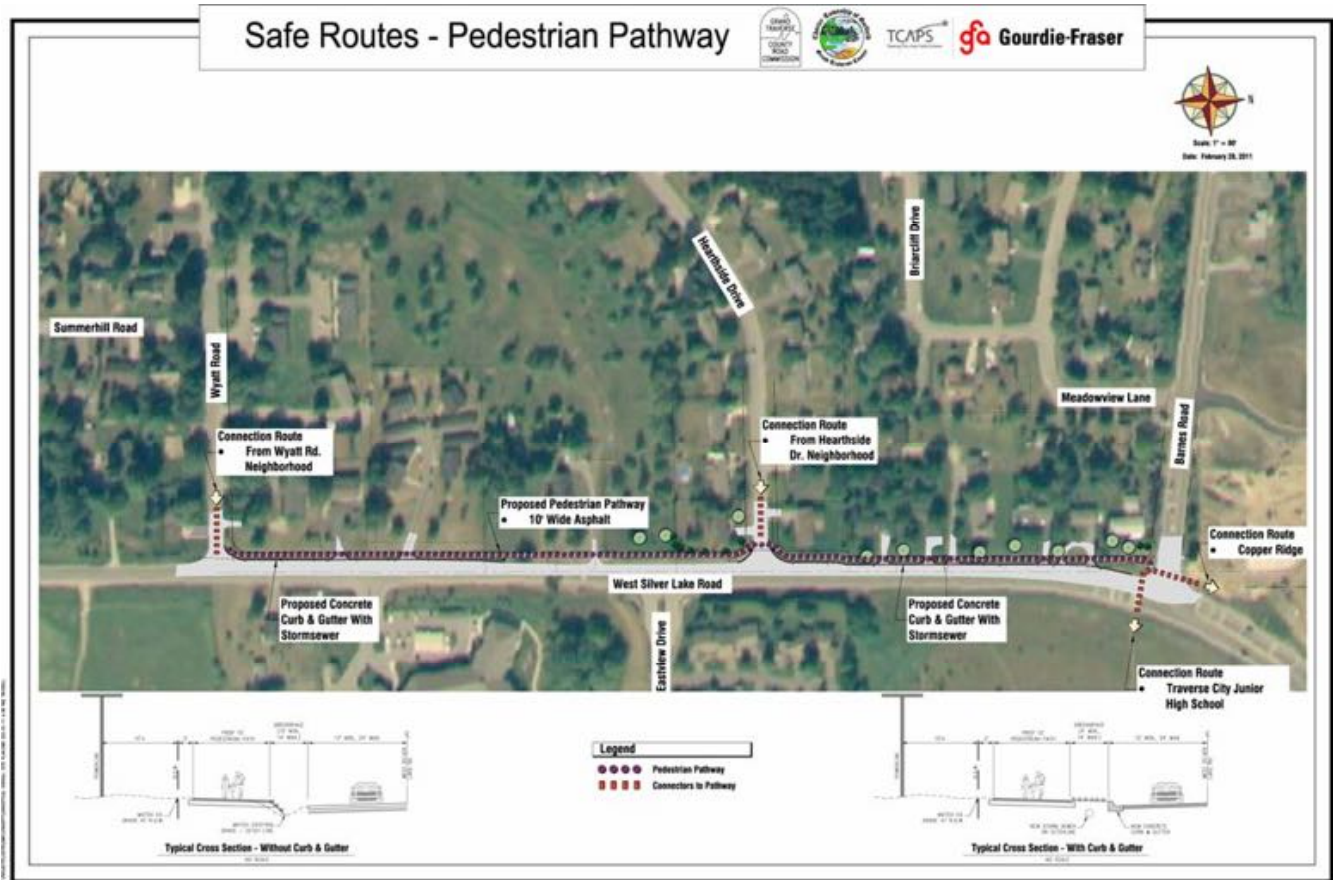
This rail-trail stretches 22 miles between Thompsonville and Elberta/Frankfort, Michigan. Services included design and preparation of construction plans and specifications. Design solutions included trailheads, overlooks, crossing, river access, off-trail connections, and signage and graphics along with trail cross sections and safety considerations. The Betsie Valley Trail is the result of a cooperative public-private venture between local governments, the State of Michigan, and the Friends of the Betsie Valley Trail.



Kingsley Schools Pathway (Grand Traverse County, MI)

This new pathway connecting the academic campus to the athletic fields helps students safely cross a busy county road and railroad crossing. The railroad crossing was needed to improve sight distance and increase safety. The finished trail is 1200 linear feet, and was finished on time and within budget.





Safe Routes to School - Garfield Township

This is a trail project currently nearing construction using MDOT Safe Routes to School Grant funding to construct a connecting pathway between Wyatt Road and Barnes Road along Silver Lake Road. Project design and bidding are administered through the MDOT Local Agency Program.



Kid's Creek Restoration Area - Garfield Township (Please see photo on reference page.)

This recreational area revitalization project included extensive stream and habitat restoration, bridge construction, and trail planning, design, and construction. In Fall 2005, a network of trails, complete with cedar fencing, bridges criss-crossing the stream, and benches for wildlife viewing were added at the site. Besides being a recreational asset this revitalization plays an important environmental role by removing nitrogen and phosphorus from the creek. Funding was leveraged from multiple sources for this phased project.



Traverse City State Park (Traverse City, MI)

Additional Park & Enhancement Projects

Traverse City State Park Construction Testing & Oversight (Traverse City, MI)

Gen's Park, East Bay Township (Traverse City, MI)

Mancelona Area Gateway Project (Antrim County, MI)

Cherry Bend Park, Charter Twp of Elmwood (Traverse City, MI)

Tuscarora Township Greendocks Rehabilitation (Indian River, MI) – Pictured on cover





References

Grand Traverse Soil Conservation District - Kid's Creek Restoration Project
Steve Largent (231.941.0960)

Charter Township of Garfield - Silver Pines Park
Chuck Korn, Township Supervisor (231.941.1620)

Department of Natural Resources - Cheboygan Trailhead
Annamarie Bauer, Project Manager (517.335.5708)

